

Proximal Contact Instrument
PerForm puts you in control



PerForm improves contacts with any matrix system. It provides you with the complete control of height and breadth when creating interproximal contacts. A simple push/pull technique keeps matrix and composite material ideally positioned while a unique lens controls curing light diffusion. The tightness of contacts is increased. PerForm is the perfect complement to every matrix system or technique.

Order no. CFK01
Contact Former Set, 2 pieces
- 1 instrument for small, 1 for large cavities

Composi-Tight™ Matrix Forceps
Precise placement, unbeatable grip



Precise Placement: The tips have a 75-degree angle with an occlusal-gingival orientation, providing a more appropriate placement angle than cotton forceps. The petite, carbide tips allow the matrix to be grasped at its upper edge to prevent distortion of the interproximal area of the band.

Unbeatable Grip: The tungsten carbide tips provide exceptional grip and tactile control for tough access cases.

Order no. BFA-1
Matrix Forceps

VariStrip Anterior Matrix Band
The only contoured anterior matrix



The Blue View VariStrip™ is a contoured anterior matrix providing the optimum curvature and band height for virtually every anterior restoration. The 0.05 mm thin plastic anatomical strip is tapered from one end to the other. The blue tint provides contrast between matrix and tooth structure without compromising composite polymerization.

Order no. VS02
Anterior Matrix Band, 50 pcs/pack

Composi-Tight™ Instruments
5-in-1 Multifunction Composite Instruments



Our multi-function instruments have double condenser configurations and carving blades on opposite ends. Now you can place, pack, shape and carve your way to perfectly contoured composite restorations without ever having to switch instruments!

Order no. TN008
Multifunction Instrument
Order no. TN009
Multifunction Instrument

Garrison Dental Solutions - Testimonials of our users

Dr. Walter Denner, Fulda, Germany:
“The Composi-Tight 3D sectional matrix system enables in an easy and reproducible manner the formation of tight, anatomically correct contacts. The sectional matrices with color on the inside also give a very good contrast and facilitate the layering of the composite materials. The strong 3D ring provides for a good adaptation of the band to the remaining tooth and has a space for the interdental wedge so that flash is easily reduced. For narrow areas the smaller ring can be used so that with this system nearly 100% of all class II restorations can be done.”

Dentist Norbert Wasch, Hückelhoven, Germany:
“Since I’ve changed my matrix system to Composi Tight 3D, I wouldn’t want to miss it. The new Composi Tight 3D XR is the perfect complement. Tight and perfect, convexly shaped proximal contacts can be created significantly easier, time for contouring and polishing the restauration is clearly reduced.”

Dr. Kari Pihlman, Läkkitori Dental Clinic, Espoo, Finland:
“I have used the 3D since it was a prototype. It is my favorite!”

Prof. Santiago González López, Faculty of Dentistry, University of Granada, Spain:
“I use your PerForm approximal contact instrument for those cases in which it is difficult to restore a contact and I think that it is an instrument that every dentist should have because it enables achieving a contact point in an easy manner.”

Paulo Melo, PhD, DDS, Associate Professor of Operative Dentistry, Faculty of Dentistry, University of Porto, Portugal:
“Achieving a good interproximal contact in class II restorations is very reliable with the Composi-Tight materials from Garrison”

Garrison
Dental Solutions

Garrison Dental Solutions
Carlstrasse 50 • D-52531 Uebach-Palenberg
Germany
Phone +49 (0)2451 971-409
Fax +49 (0)2451 971-410
E-Mail: info@garrisondental.net
Web: www.garrisondental.net

Perfect contacts with zero flash.
3D XR delivers outstanding
performance even on difficult
dentition.



Garrison
Dental Solutions

Perfect contacts with zero flash.
3D XR delivers outstanding performance even on difficult dentition.

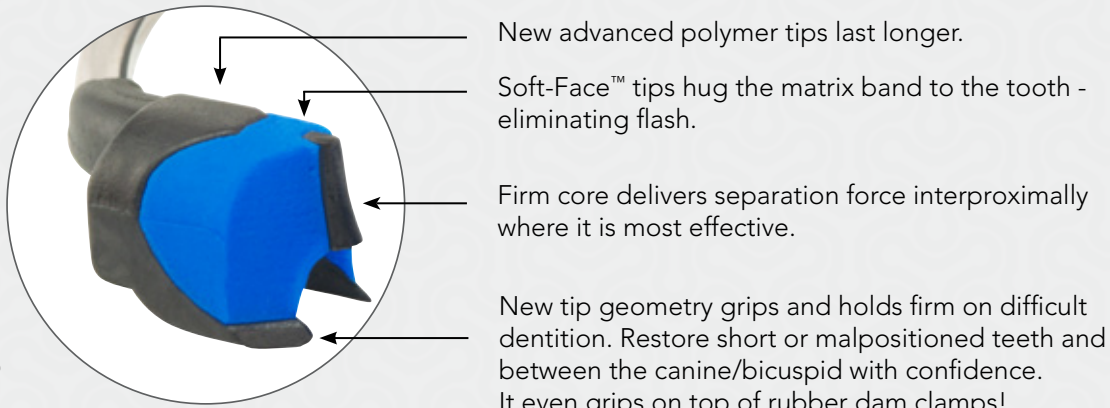


A ring that stays where you put it! The new Composit-Tight™ 3D XR is engineered for tricky situations.

- + No spring-off with short or malpositioned teeth or between the canine/bicuspid
- + Precise adaptation of the matrix with blue soft silicon
- + Reinforcement overmold for extra strength and resistance to ring fatigue
- + Tips of rings are shorter. Ring can be placed directly over rubberdam clamps



The Dental Advisor – Top Sectional Matrix System and Editor's Choice 2012 and 2013.

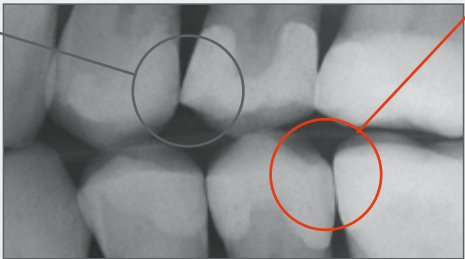


Why use a sectional matrix system from Garrison for Class II's?



Traditional Matrices

- Fails to restore proximal anatomy
- Thin contact at the marginal ridge
- Large food trap below
- Increased likelihood of fracture, occlusal interference, recurrent caries and periodontal disease



Composit-Tight™ 3D XR

- Anatomically correct contacts
- Contacts at the height of contour
- Rings produce optimal tooth separation for excellent, tight contacts
- Naturally contoured bands
- Operator-friendly retaining system

Composit-Tight 3D XR

Composit-Tight™ 3D XR
Upgrade to rings that won't "Spring-Off"



- Order no. 3D-MSW-00
System Kit with blue and orange rings:
- 1 Soft Face 3DXR Extra Retention Ring (blue)
 - 1 Soft Face 3D-Ring (orange)
 - 20 Slick Bands non-stick matrices assorted
 - 20 Wedge Wands plastic wedges with handle
 - 1 Ring Placement Forceps

Simple technique:



1. Place matrix band.



2. Insert wedge.



3. Place ring over the wedge.

Order via most dealers or call +49 (0)2451 971-409.

Composit-Tight 3D XR

Refills

Rings

The Composit-Tight™ 3D XR Blue Soft-Face™ Sectional Matrix Ring is an ultra-retentive matrix ring designed for use with short or malpositioned teeth, including areas between the canine and first bicuspid.

The orange Soft-Face™ 3D Ring provides maximum ease of placement and adaptation to a wide variety of tooth anatomies while reducing flash.

- Order no. 3DXR-1
Soft Face 3DXR Ring (blue), tips 4.9mm high
1 pc/pack
Order no. 3D500-1
Soft Face 3D-Ring (orange), tips 6.5mm high
1 pc/pack



3DXR-1



3D500-1

New



Composit-Tight. Slick bands Non-Stick Matrices

Slick Bands XR Matrices

The non-stick coating reduces adhesion to bonding and composite materials. Small Grab-Tabs™ facilitate placement. The shape has been improved for deep cervical preparations. The matrices are dead-soft, three-dimensionally contoured and available in 5 sizes. They are 0.038mm thin.

- Order no.
- | | | | |
|----------|---------------------|-------|-------------|
| SXR100-M | premolar/grey | 4.6mm | 50pcs/pack |
| SXR150-M | premolar w/Ext./red | 6.7mm | 30 pcs/pack |
| SXR175-M | medium molar/purple | 5.4mm | 50 pcs/pack |
| SXR200-M | molar/green | 6.4mm | 50 pcs/pack |
| SXR300-M | molar w/Ext./blue | 8.4mm | 30 pcs/pack |



SXR100-M



SXR150-M



SXR175-M



SXR200-M



SXR300-M

New