

The background of the entire page is an abstract, low-angle photograph of a complex, interconnected network of metallic tubes. The tubes are highly reflective, showing bright highlights and deep shadows, and they crisscross in various directions, creating a sense of depth and three-dimensional structure. The overall color palette is a range of blues and teals, from deep navy to bright cyan.

AVINENT

A global experience

AVINENT®
Implant System

AVINENT, a mission to lead

AVINENT sets the standards in dental implants. Scientific research lies at the heart of its implants system and its division that designs customized prostheses fabricated using CAD/CAM technology. AVINENT is the leader in Spain and is recognized internationally in its field.

The world is our home

AVINENT has its own commercial network in Spain, Great Britain, and Portugal and is rapidly expanding elsewhere. It exports to countries in Europe, America, Asia, and Oceania, and it has forged strategic alliances with global companies such as the CORE3D group.

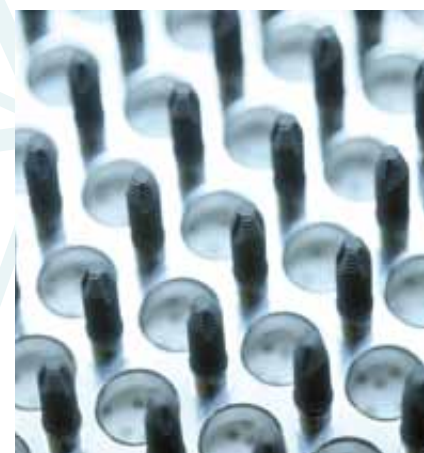
The top innovative team

AVINENT conducts constant research focused on developing products and services. We have our own in-house research team and we work hand in hand with universities and the very best science and technology centers in Spain.

Supreme service

AVINENT has embraced an advanced concept of customer service, ensuring a fast response, a sense of duty towards our clients, personal treatment, and individual advice. Customer satisfaction is our goal.

**AVINENT is more than
a brand of products
and services: it is an
experience shared
with clients.**



AVINENT, a powerhouse of innovation and development

2.000 m² of intelligent premises

More than 2,000 m² of AVINENT's corporate headquarters are given over solely to innovation: intelligent premises in which AVINENT develops and makes implants, prosthetic accessories, and dental structures using digital technology; clean rooms with microbiological control, chemical treatment labs, and highly specialized zones set aside for specific purposes; functional and modern headquarters in which the technological spirit of the company is crystallized.



International scope

AVINENT's marketplace is the world. Now that it has consolidated its position as the leader in Spain, the company is implementing a determined internationalization strategy and has established a presence in numerous international markets. AVINENT seeks important strategic alliances, thereby joining new commercial networks, improving the transfer of knowledge, acquiring new specializations, and continuing to grow across the globe.



In-house talent and top-ranking partners

Leaders in research

AVINENT engages in long-term collaborative projects with universities and technology centers. The company's in-house scientific committee works with some of the most advanced university and research centers in the world to develop new product, services, conduct studies and improves techniques etc. Research is AVINENT's raison d'être.

AVINENT has a in house design team who are experts in biomedical engineering. We also work with leading dentists and laboratories who are developing innovative solutions and applications in existing and new materials.

The company's **scientific committee**, consisting of a multidisciplinary team of experts in dentistry, surgery, prosthetics, and other fields, works with universities, technology centers, and private clinics. Its goal is to carry out clinical studies and research projects and to generate scientific and technical literature related to its specialist sphere.



Bringing experience to international congresses

AVINENT conducts basic research to develop new information and knowledge for the sector. The company presents clinical and prosthetic case studies at major international congresses. We at AVINENT are contributing to advances in the field of dentistry. We are building the future.




Contributing to professional training

AVINENT works hand in hand with universities in professional training. We organize postgraduate courses and advanced workshops on various aspects of implantology. AVINENT offers an extensive training program, with sessions taught by the finest professionals in the field.

We contribute to the training of new dentists and technicians. We share new techniques and materials. We foster new talent.

The partners with which AVINENT conducts basic and clinical research include:





State-of-the-art dental implant system

Two implants, the most advanced surface

AVINENT implant systems have a revolutionary system inspired by nature, the BIOMIMETIC ADVANCED SURFACE, an AVINENT creation enriched with calcium and phosphorus, component minerals of bone tissue that aid rapid osseointegration.



CORAL **OCEAN**

AVINENT has developed two implant systems, **CORAL** and **OCEAN**, both of which are shaped to ensure excellent primary stability. They also both have a biomimetic surface, which contributes to secondary stability, leading to optimum osseointegration and excellent aesthetic results.

The **CORAL** and **OCEAN** systems are also notable for their very simple placement protocols and because they employ the same surgical kit for internal and external connections.



AVINENT implants provide solutions for every kind of treatment and indication: surgery in one or two phases, immediate placement after tooth extraction, immediate or delayed loading, etc.

AVINENT supplies its implant systems with **internal hex (IH)** and **external hex (EH)**, ensuring maximum versatility in any restoration protocol.

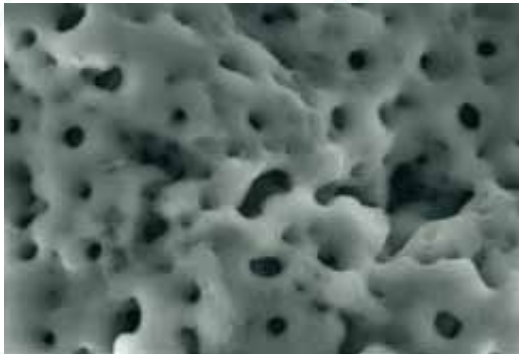


Thanks to their design, AVINENT implants guarantee optimal preservation of peri-implant tissue and hence better long-term outcomes.

Biomimetic

The secret lies in nature

AVINENT set in motion an ambitious research program and, as a result, has developed the BIOMIMETIC ADVANCED SURFACE, inspired by the biochemical processes that occur in nature. AVINENT carried out extensive research to create a surface that would speed up bone-implant interaction. The secret to the company's success was found locked away in nature, the inclusion of calcium and phosphorus in the implant surface. These two chemical elements are found in our bodies and are essential to life.



Ca

Calcium exists in a wide range of forms in nature and is abundant in the Earth's crust. In living beings, calcium phosphate is a crucial element of bones and teeth. Calcium is also essential for nerve impulse transmission and for muscle tone.

Phosphorus is crucial to all living beings. This chemical element is found, combined in inorganic phosphates, in organisms' every cell and fluid. It plays a part in bone formation and maintenance, in the development of teeth and the formation of muscle tissue, and in cell metabolism.

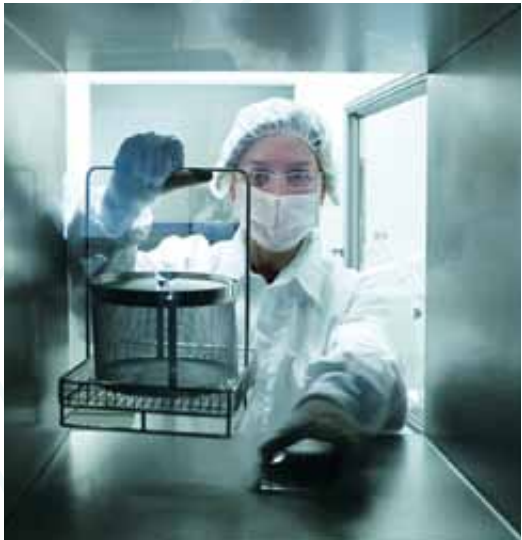
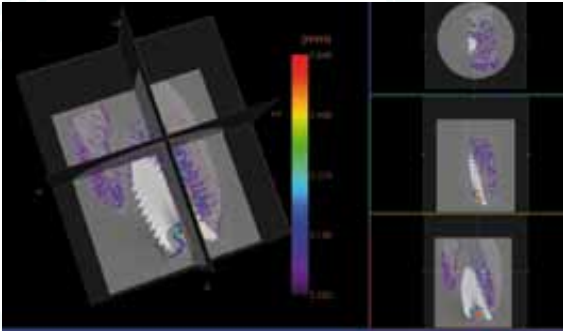
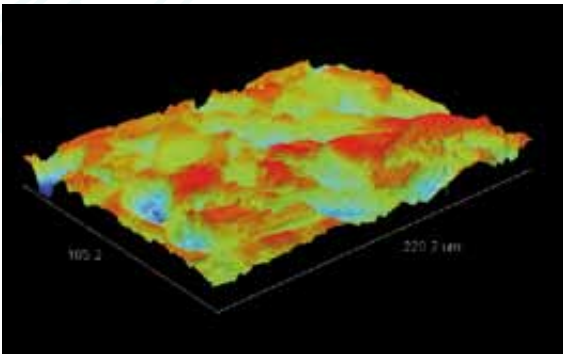
P

Biomimetic properties that aid osseointegration

Optimum structural roughness. The surface treatment, which provides macro-roughness and microporosity, and the inclusion of calcium and phosphorus between them give the surface totally biomimetic properties.

Hydrophilicity. The results obtained while determining the contact angle clearly demonstrate that the implant surface is hydrophilic in behavior. The consequence of this is improved integration between the implant and the biological environment, thus aiding osseointegration.

Bone cell generation induced. Scientific studies and clinical evidence confirm the success of the BIOMIMETIC surface treatment. The topography of the implant surface facilitates both the migration of bone cells and osteogenesis.



Scientific excellence, constant creative evolution, optimum outcome

The surface of AVINENT implants is the result of constant research. AVINENT reinvents itself every day, as its biomedical engineering team continues to develop new designs and solutions. AVINENT implants are a benchmark in the market, a splendid letter of introduction. Even so, the company's creative evolution maintains its advance: we are acquiring new knowledge to offer ever better quality, we are collaborating with experts in the field, and we are inventing new systems.

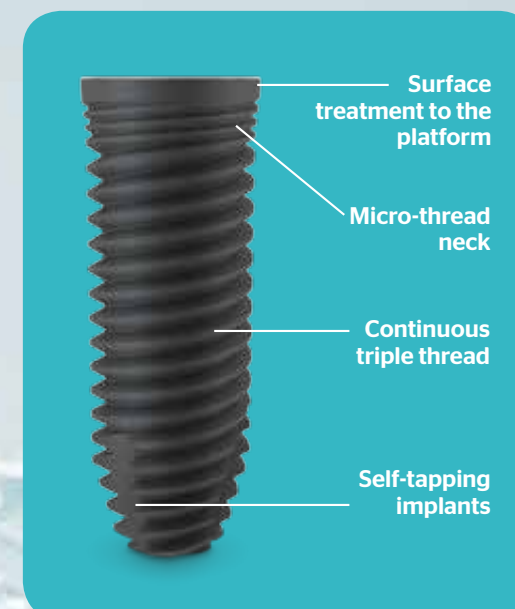
CORAL and OCEAN are AVINENT's contribution to the world of implantology. They are our way of working towards perfection.



AVINENT CORAL: Predictable and reliable

CORAL is the first implant system developed by AVINENT and came about as a result of intensive research in the fields of biomedicine and materials engineering. CORAL implants have proven their outstanding predictability and supreme reliability during the years they have been on the market.

Their remarkable shape and innovative BIOMIMETIC surface aid optimal tissue preservation, giving excellent aesthetic results.



Shape of the implant:

- ▶ Three different tapers, which replicate the root of the tooth.
- ▶ Micro-thread neck, ensuring primary stability, distributing loads in an optimal manner, and reducing the stresses on the marginal bone area.
- ▶ Continuous triple thread, making insertion of the implant easy.
- ▶ BIOMIMETIC ADVANCED SURFACE, which increases the bone-implant contact (BIC) percentage and speeds up osseointegration.
- ▶ Self-tapping implants to facilitate the insertion and positioning of the implant.
- ▶ Available with internal and external hex.
- ▶ Includes platform switching during prosthetic restoration, aiding the adaptation of soft tissues and ensuring an optimal aesthetic result.

Results: predictable and attractive

The CORAL system guarantees outstanding long-term predictability and extremely attractive results.

Biomimetic

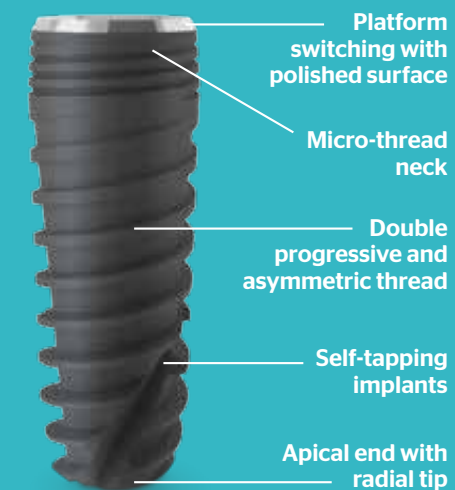
CORAL

AVINENT OCEAN: innovative and stable

The OCEAN system adds to the range of AVINENT implants and is a new line that has all the innovative features of the CORAL implant, as well as new concepts to provide a solution to emerging surgical and prosthodontic needs.

The shape of the OCEAN system gives remarkable primary stability and bone preservation, as well as outstanding aesthetic results.

The OCEAN system surgical procedure is uncomplicated and features a purpose-made surgical box with drills especially shaped to make the drilling procedure simple and precise.



Shape of the implant:

► Shape adapted to the biological architecture of bone.

► Platform switching at positive angle with polished surface, aiding the adaptation of soft tissue and ensuring excellent aesthetic results.

► Micro-thread neck, improving bone-implant contact and the distribution of the stresses in the cortical zone.

► Progressive and asymmetric double thread, which enables the implant to adapt perfectly to the various areas of the bone, thereby guaranteeing its penetration capacity in the apical zone and compacting capability in the area of the body of the implant.

► Apical end with radial tip that guides the entry and advance of the implant during insertion and which reduces the trauma to the anatomical peri-implant structures at the apical level.

► BIOMIMETIC ADVANCED SURFACE, which increases the bone-implant contact (BIC) percentage and speeds up osseointegration.

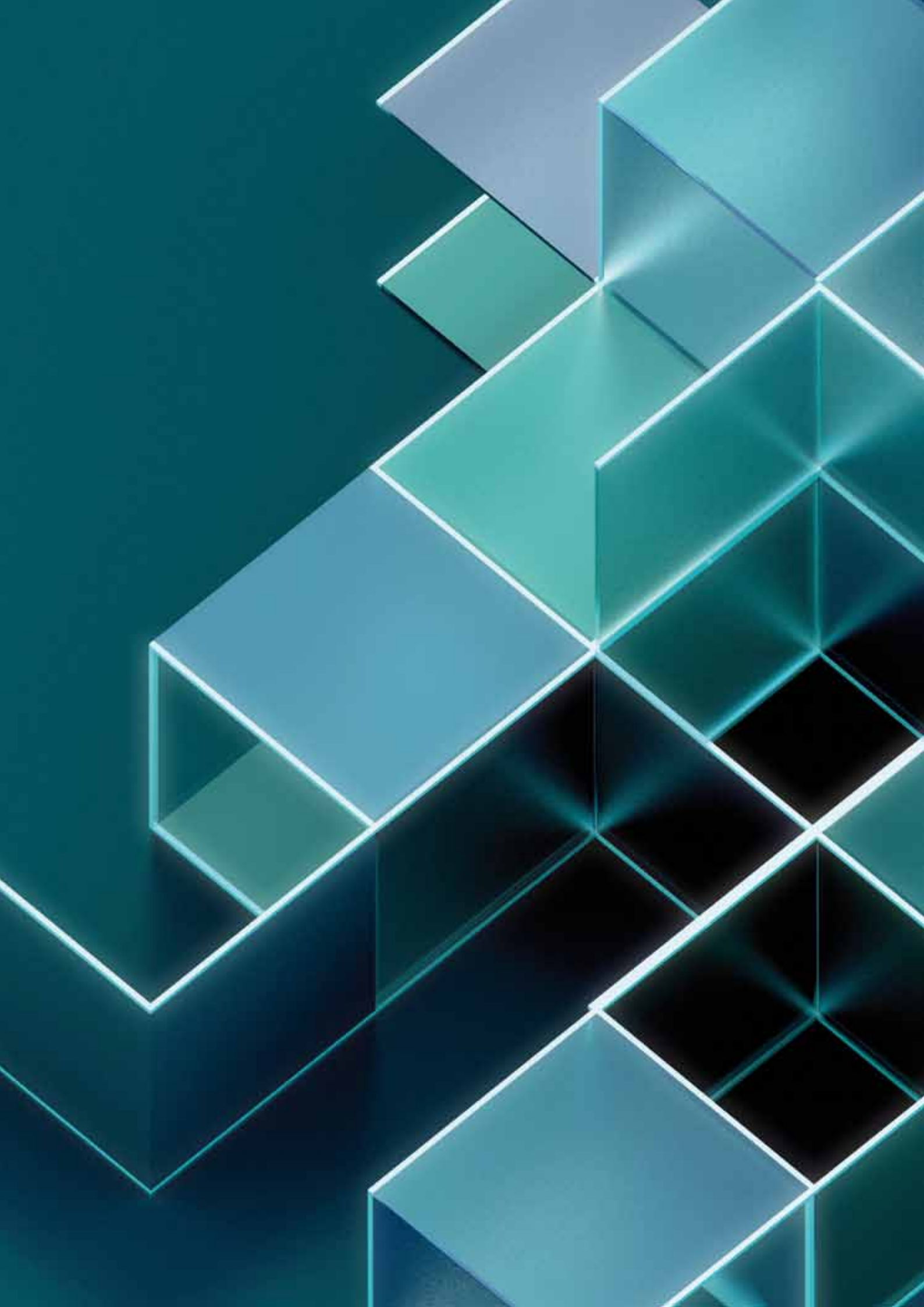
► Available with internal and external hex.

Results: innovative and attractive

The OCEAN system has an innovative shape and guarantees unbeatable results.

Biomimetic

OCEAN



**Joining forces
with CORE3D,
a world of
digital solutions**

AVINENT and CORE3D, a leading alliance for the digital era

The future of the dentistry sector is digital, and AVINENT is the best partner for companies looking to make the leap into this new era. The company's CAD/CAM division is part of the international technological alliance of CORE3D milling centers, one of the leading groups worldwide. CORE3D has the ability to undertake every stage of making customized prostheses, including digital scanning, designing, and milling using CAD/CAM technology. AVINENT is linked to this vast platform of digital solutions and is contributing its technology and experience to the group's development.



Technology transfer, optimal digital solutions

CORE3D has become a world leader in milling structures obtained using digital systems thanks to the constant exchange of information between the companies in the alliance. CORE3D is able to retain its position at the forefront of this constantly advancing sector because the laboratories in the alliance share their experience and knowledge, which is quickly passed on to all the partners around the entire globe. AVINENT is one of the CORE3D partners. With its background in employing CAD/CAM technology to make structures, AVINENT is contributing to the development of optimal solutions for dentists and laboratories that want to enter the digital world of prosthetics.



AVINENT's active contribution to CORE3D

AVINENT was one of the first companies to employ digital technologies to fabricate customized structures. Its digital division pioneered this type of technology in Spain, initially using cobalt-chrome and later other materials. AVINENT has placed its experience and know-how in using CAD/CAM technology at the service of CORE3D and is actively contributing to the alliance's growth and consolidation. The result is a fusion of the most advanced technology in scanning, designing, and machining quality structures accurately and efficiently.



State-of-the-art technology

AVINENT markets and sells the products, services, and technologies of the CORE3D group, which remains at the forefront of the sector thanks to the technological alliance that makes it a veritable platform: a multi-brand system that works with the widest range of materials on the market; a business famed for its personalized service and ability to deliver products in just 48 hours.



Design, precision, speed, and efficiency

AVINENT's CAD/CAM division relieves prosthetics laboratories of the burden of the long and imprecise process of making prostheses. We have moved on from the old way of making prostheses to an advanced and rapid method in which structures are machined using digital technology. This leap into the future is being consolidated by the unstoppable growth of CORE3D, which, thanks to the experience of its partners in five continents, offers total versatility, with structures for all types of connections that are compatible with every brand of implant. CORE3D is a leading group worldwide and AVINENT is one of its principal partners. Together we are paving the way towards the dentistry of the future, which is entirely digital.



Committed to health, committed to our clients. The AVINENT ten-point philosophy

AVINENT's commitment to health – its values, approach and attitude – can be summed up in the following ten points, a mission statement that reflects the company's determination at all times to serve the client, the sector, and the end user of its products and services.

1 Commitment to health

We work for people and are resolute in our determination to achieve excellence. Our range of products and services are intended to improve people's quality of life.

2 Passion for science and research

With our latest-generation premises and equipment, we engage in research to innovate and develop new lines of state-of-the-art products. We collaborate with research centers on studies published in specialist journals.

3 Professionalism

We have longstanding experience as a company going back more than 50 years and we have a highly skilled team of staff from the fields of science and engineering. We offer technical and clinical advice to our clients.

4 Transparency and openness

Our corporate culture is one of transparency and receptiveness. We are alert to developments in the sector, we watch market trends, we listen to our clients' proposals, and we collaborate with experts.

5 Utmost reliability and rigor

We control the entire production process by using strict control systems that monitor fabrication, packaging, sterilization, transport, etc., and we have received every endorsement from reporting agencies.

6 Proximity

Our aim is to serve, and to that end we offer a personal service. We have our own exclusive and professional commercial network consisting of young, well-trained staff ready to serve clients 24 hours a day, 365 days a year.

7 Quick and speedy

We offer a fast service and attention to clients. As we hold extensive stocks, we guarantee maximum speed in processing orders for all our product ranges.

8 Flexibility and adaptability

We adapt to suit the client's needs. We are flexible when it comes to offering our products and accommodating in responding to your requirements in a personalized manner.

9 Pricing policy

We offer high-added-value products and services and we guarantee competitive prices.

10 Business solidity

We are a sound, competitive business group with a growing presence in international markets, and we have a technological division that specializes in developing products for the medical industry.

AVINENT

An experience in success and leadership

We supply implants with an innovative biomimetic surface and a revolutionary design. We offer a world of CAD/CAM prosthetic solutions. We engage in technological research and development. We have top-ranking partners worldwide. And our market penetration stretches around the globe.

All this to give our clients maximum satisfaction.

AVINENT, an experience of success.

AVINENT®
Implant System

Code: MOFIC6-2